



**ANNUAL
REPORT
2021**



**The Infant Welfare
Society of Evanston, Inc.**

FROM OUR EXECUTIVE DIRECTOR



As we reflect on 2021 and a second year of the global pandemic it is hard to not think of all of the lives that have been lost, the mental health and stress that has been caused and the challenges we have endured. Everyone has been touched by this pandemic and the difficulties we have had to overcome. I specifically think of our staff and teachers and the commitment, dedication and professionalism they have demonstrated over this prolonged period of time. Our resiliency and strength as a staff and organization has been a bright spot throughout.

Our organization serves our youngest children, ages 6 weeks to 5 years old. We support and walk alongside our parents and families providing resources, support and sometimes a shoulder to lean on. Our hope is to develop trusting partnerships and relationships with our families. Raising our babies and infants in any environment is difficult to say the least but during this pandemic it has simply been overwhelming. However, it has been our partnerships with families and support from the early childhood community and elsewhere that has allowed us to stay strong and positive

Despite our challenges, we have been able to take advantage of the various Federal and State funds that have been released due to COVID-19 as well as applied for new grants and continued reliance on our community of donors and supporters. We sincerely thank those of you that have been committed to our mission. We have emerged from 2021 in a strong financial position and have been able to take care of our staff and teachers in the forms of compensation via bonuses and hazard pay that honors their work and tireless commitment to the field of early childhood education during this time.

As we look ahead to 2022 we will remain optimistic for the end of this pandemic and a return to some level of normalcy. What we have learned about ourselves and our organization is that we are strong, resilient, adaptable and persistent in our care and commitment to our families and community. IWSE is made up of a team of people that care deeply about our community and believe that we have great impact in the lives of our children and families.

I wish everyone to be safe in these uncertain times and to believe that our community can be strengthened from the challenges we face together. Our response and reaction to adversity can shape the future and help lead the way to better times ahead.

Respectfully,

Stephen Vick, MA
Executive Director, IWSE

FROM OUR SITE DIRECTORS

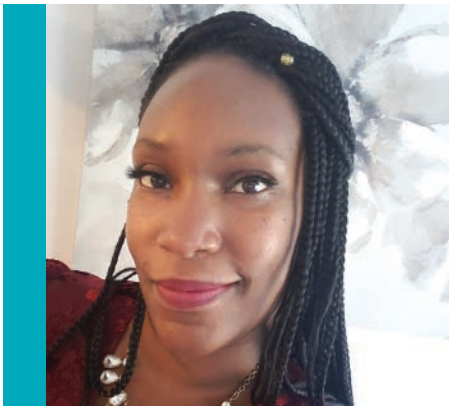


2021 continued to be challenging as we worked diligently to keep children, families and staff healthy and safe during the pandemic. As the Site Director of Baby Toddler Nursery my diligence remains even stronger.

As we continued to build back our programming we were able to incorporate some in-person early intervention services for the children who most needed it. With that we saw an increase in stabilization of mental well-being. That was just one aspect of helping families, children and staff sustain along with many more services.

With the pandemic in mind we still have a ways to go to really get back to some normalcy. As I have stated before I will continue to be a sounding board and work hard to help us accomplish our goals.

Sincerely,
Pamela Staples,
Site Director of Baby Toddler Nursery



As the Site Director for Teen Baby Nursery and the Family Support Program I have the great privilege of overseeing two dynamic programs that focus on the health, safety and educational wellbeing of the children and families that we serve. 2021 has taught me so much about the importance of care, nurturance, and support. These three qualities have been exhibited amongst our team and have proven to be a strengthening aid as we carry on this great opportunity to begin the building work on this educational journey for our children.

Through the many challenges that the pandemic has bought upon our program one thing has remained the same this year: the strength and resilience of our team has been phenomenal. I would like to acknowledge all the hard work and commitment that has been made by our entire team to continue to offer high quality care and education despite the many challenges we have faced. As we press on into another year, I am dedicated to continuing to support and guide our staff, children, and parents in the best way possible as we continue to lay a solid foundation for educational excellence in our youngest learners!

Sincerely,
Tiffany Culpepper M.Ed.
Site Director of Teen Baby Nursery and Family Support Program

OUR MISSION



OUR WORK

Infant Welfare Society of Evanston's mission is to deliver exceptional care and education for infants and young children and support families' efforts to be effective parents and advocates in their child's learning and development.

The Infant Welfare Society of Evanston serves Evanston and its surrounding communities with programs that nurture, support, and educate the whole family.

IWSE runs two full-day, NAEYC accredited child care and early education facilities — Baby Toddler Nursery and Teen Baby Nursery — and provides comprehensive parenting support and education through our Family Support Program. In our centers, we keep our class sizes small, encourage family participation, and celebrate each child's uniqueness and individuality. Family Support strengthens at-risk families by giving them the tools to be successful.

We aim to act as an advocate, care-taker, and champion for all of our children. We believe that all families deserve access to high-quality care and early childhood education. We serve families of all socioeconomic levels, so their children can enter kindergarten ready to learn. No matter the level of need, there is a place for your child and your family at IWSE.



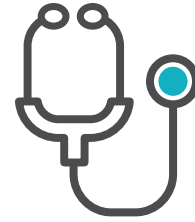
OUR FISCAL YEAR: 2021 IN NUMBERS



151 children received high-quality early childhood education through our two center-based programs and our Family Support Program.



78 children were living in households at or below the federal poverty level.



140 children received regular developmental screenings. All center-based children had medical exams and dental screenings when age-appropriate



140 classroom-based children were assessed and noted to make progress across developmental domains.



12 children were identified as needing supports to address learning challenges.



10 children were connected to ongoing supports that address learning challenges.



136 parents reported more positive interactions with their children.



26 infants and toddlers of teenaged and young adult parents received services in our Teen Baby Nursery.



57 children were served by the home visiting program.

OUR ACCOMPLISHMENTS

In the second year of the COVID 19 Pandemic IWSE continued to achieve successes and serve our community and families. Though much of our attention was on safety and COVID protocols to keep our centers open, we worked hard to maintain our partnerships and celebrate our accomplishments.

- We developed a protocol for weekly on-site testing with our staff and teachers. Safety procedures and being proactive to keep our centers open was critical to our success in 2021. Our weekly testing protocol for all staff was one of the efforts that makes IWSE a leading early childhood education provider in our community. We also achieved 100% vaccination of our staff in 2021.
- In the beginning of 2021, we committed to our services in Niles Township by officially renting space at 4121 Oakton to support our Home Visiting/Family Support program which serves 60 families mostly in the Niles Township area of Skokie and Morton Grove. While we continue our strong partnership with School District 69 and the 0-5 Ready for Success program, we are eager to grow our services and meet the needs of other families in our Niles Township community.
- We applied for a Northwestern University Community Partnership grant in collaboration with the Early Childhood Council in Evanston receiving 60k to support mental health services for our early childhood families and children. These are critical funds that have helped many families across our programs and services.
- We hosted our first virtual fundraising event for IWSE in February of 2021. Our wine tasting event had over 70 participants who learned about some wonderful wines by our guest sommelier. Funds were raised to support our programs and services at IWSE. It was a wonderful evening in the safety of our homes. We were able to drink and enjoy company and learn about wine and their food pairings.
- In 2021 we also celebrated our 50th Anniversary at Baby Toddler Nursery as the first licensed 0-3 Early Childhood Education program in the State of Illinois and one of five across the nation in 1971. This celebration and fundraiser raised almost 150k and acknowledged our history, leadership and success as an early Childhood provider in the State of Illinois. We were fortunate to have State Senator Cristina Pacione-Zayas, a champion for Early Childhood, speak at our event and present her with the Early Childhood Champion Award for her efforts in Springfield and over her career.
- In partnership with our other early childhood providers, the Evanston Early Childhood Council has worked diligently to express and present the need for City Covid relief funding to support the EC community. The City of Evanston received 46 million dollars of COVID relief from the Federal Government. The EECC with help from IWSE presented a proposal to the City Council for 1.75 million dollars to be directed to the EC community. We are hopeful to see this money in early 2022.
- We would be remiss not to mention as an accomplishment our ability to keep our centers and programs open, supporting our staff and families. We have kept everyone as safe as possible with our procedures and protocols and maintaining our operations with minimal disruptions. This has been no small task during the Pandemic and we are very proud of our tireless work, commitment to community and team effort.
- In 2021 we continued to benefit from the forgiveness of the \$350,000 PPP (Paycheck Protection Program) loan initiated in 2020. The loan was spread over two fiscal years with \$150,000 committed to 2021 revenue.

**89% OF DONOR
CONTRIBUTIONS GOES
DIRECTLY TO OUR PROGRAMS
& SERVICES.**

The way we worked, persevered and overcame challenges:

- IWSE maintained its commitment to quality through our staffing. We made a commitment to retain and pay all of our staff despite the economic uncertainty.
- We continued operations during the Pandemic with minimal disruptions in 2021. Occasional classroom closures and sanitization of classrooms was necessary with contact tracing and some isolated COVID positivity. We continued to follow our procedures closely and adapted when needed to updated CDC, IDPH and other health and safety guidelines.
- We remained committed, vigilant and strong in will and kept working and supporting children and families despite the challenges of the pandemic.
- Our staff and programming became stronger and worked to achieve the greatest success possible. Our team of teachers and leadership staff committed to our mission and delivered the highest quality services in extreme circumstances.
- Despite all of these concerns and issues, every child was screened for developmental delays within 45 days of entry into the program whether virtually or in person. Staff administered the Ages & Stages Questionnaire (ASQ3), Ages & Stages Questionnaire (ASQ: SE2) Developmental Screening Tool.

**IWSE IS AN
ADVOCATE,
CARE-TAKER, AND
CHAMPION FOR
CHILDREN AND
FAMILIES IN OUR
COMMUNITIES.**

FAMILY ENGAGEMENT

Family engagement is crucial to the success of our programs. IWSE recognizes that parents are the child's first teachers, and are the first step in early learning for their children. Our goal at IWSE is to support these parents in their journey to being advocates for their children as well as being involved in the processes of their young educational experience. All of our families are encouraged to be an active part of the programming and structure of our organization.

Our centers provide many opportunities for this (with child-care, transportation and meals, if applicable), including:

- Monthly parenting workshops and activities around a variety of topics, including adult education, transitions, health & safety, financial stability, parent/child relationship building and infant mental health;
- Parent committee or policy council membership;
- Home visits by center and family support staff;
- Parent teacher conferences;
- Developmental screenings, partnering with IWSE staff, developmental specialists, and parents/caregivers;
- Volunteering in classrooms;
- Other family engagement activities

Amid ongoing health precautions, IWSE continued virtual engagement for children and families. In addition, we were happily able to host some in-person, outdoor parent engagement activities such as the Ice Cream Social, Fall Fest and reading with the Evanston librarian. These small doses of engagement during this time afforded us the opportunity to maintain our connections with families on a social level all while practicing social distancing.

COMMUNITY ENGAGEMENT

IWSE has longstanding partnerships with federal, state and local government agencies as well as an integrated network of local non-profit groups that provide complementary services in our community. Our close cooperation with other community agencies enhances our commitment to supporting parents as advocates for their children. Our families can receive the guidance and support needed to help them be successful at achieving their goals, and to also learn the importance of being actively involved in their children's early education. With the help of our Family Advocate we help connect families to resources that are specific to their own individual needs, including homelessness, unemployment, domestic disturbances, or even obtaining library cards.

This year we continued outreach with our community partners mostly on Zoom and other IT platforms due to the pandemic. Some of our stronger collaborations include the Evanston Early Childhood Council (EECC) with 40 partner organizations; the Early Childhood Alliance (ECA) with over 30 participating partners and organizations in Niles Township; and The Collective, a Cradle to Career cohort of nine organizations. The IWSE Executive Director, Stephen Vick, serves on the Steering Committee of both the EECC and the ECA.

IWSE also had the wonderful privilege of hosting Chef Q for a professional development session with our staff and families about the importance of gardening and how using fresh ingredients is beneficial for all. The Family Support Program hosted a Developmental Screening Event in conjunction with D69 Open House. Each Home visitor was equipped to administer on the spot developmental screenings for children ages 0-3.



**THE COLLABORATION BETWEEN EARLY CHILDHOOD STAFF,
FAMILIES AND COMMUNITY AGENCIES BUILDS POSITIVE
RELATIONSHIPS THAT SUPPORT PARENTS' PROGRESS TOWARD
THEIR GOALS FOR THEMSELVES AND THEIR CHILDREN.**

HEALTH & SAFETY

Health, safety and nutrition are of paramount importance in our early childhood sites. We maintain accurate records of physicals and immunizations. Parents are reminded regularly of the importance of wellness and are encouraged to attend workshops on nutrition and other wellness practices. Additional supports are provided by the services of a Health Consultant and a Speech Therapist.

IWSE has a Developmental Services Coordinator and Mental Health Consultant who meet with the teaching staff to discuss therapies and strategies for coping with children with special needs. Every child's development is assessed with the parent by the 45th day of their enrollment. Any lags in physical, social emotional, communication or other development are discussed with the parent. Individualized activities are provided for children to address any areas of concern. Parents have a variety of options including a referral for Early Intervention services, having their child participate in small group therapies, and an opportunity to meet with a clinical psychologist. Children are monitored monthly in all domains, including health, in monthly multi-disciplinary meetings.

In light of the ongoing pandemic, health and safety have taken on a new look. Some therapies and weekly multidisciplinary meetings continue to be conducted remotely, while others are now performed on site, of course keeping in mind new safety procedures. Reduced classroom sizes allow for social distancing, and PPE equipment is available at every area of the centers. Continual cleaning and disinfecting and ongoing training ensure the safest environment for all children and staff at IWSE.



**EARLY CHILDHOOD
DEVELOPMENT AND
EDUCATION ARE KEY
DETERMINANTS OF FUTURE
HEALTH AND WELL-BEING.**

**IWSE'S SPECIALIZED CARE
AND EARLY LEARNING
EXPERIENCES PROMOTE AND
NURTURE OPTIMAL
DEVELOPMENT.**

SCHOOL READINESS

High quality care and education is of the utmost importance through all of our services. Focusing on five central domains for school readiness ensures quality care and education for each child:

- Approaches to learning
- Social-Emotional Development
- Language and Communication
- Cognition
- Perceptual Motor and Physical Development

With these in mind, meaningful activities are planned each day for the children and individualized to each child's needs. Each child has an education plan based on tasks appropriate for his/her age and developmental level. Early literacy is a primary goal and children are read to regularly and "read" to themselves. Parents are encouraged to read to their children frequently at home.

This year, social-emotional awareness became even more critical due to the pandemic. Teachers actively planned for a significant focus on this developmental area, with great benefit to the children and families in adjusting to the current situation.

Each site is accredited by NAEYC and are recipients of the ExceleRate Gold Circle of Quality. Our team is dedicated to providing exceptional instruction to all children; in support of this, ongoing professional development opportunities are provided to all staff to keep up to date and expand their knowledge in Early Childhood Education.



COVID-19 AND THE GLOBAL PANDEMIC RESPONSE IN 2021

In the second year of the Pandemic we continued to rely on our supporters and donors to ensure our funding was sufficient to carry out our mission. Our partners also played an important role in allowing us to continue serving our families and children. A special thanks goes out to the following organizations and foundations:

Evanston Community Foundation

Provided multiple \$25,000 operating and emergency grants throughout the year.

The City of Evanston Social Services Committee

Awarded IWSE \$75,000 to support Teen Baby Nursery and our case management services.

The George S. Kendall Family Foundation

Provided \$100,000 in unrestricted support for our services and programs.

The Illinois Restoration Grants

The State of Illinois supported our losses in enrollment revenue with over \$200,000 in subsidy grants.

The Evanston Early Childhood Council

Dozens of hours in support and partnership working to elevate and enhance our Early Childhood System in Evanston.



**Thank you to everyone who contributed to our work and effort
in the community supporting our children, families and staff.
We are incredibly thankful for your support and commitment
during this difficult crisis.**

IWSE 2021 EVENTS & FUNDRAISERS

Baby Toddler Nursery Celebrates its 50th Anniversary as the 1st licensed Infant and Toddler center in the State of Illinois and one of five in the country in 1971.

In June of 2021 we celebrated our BTN center’s 50th anniversary with special guest Sen. Cristina Pacione-Zayas. Sen. Pacione-Zayas was honored with the Early Childhood Champion Award for all of her work and effort in the State legislature to support the mission of Early Childhood Education. IWSE was the 1st licensed infant and toddler center in the State of Illinois. We are very proud of our history of over 108 years serving the community and adapting to the needs of our parents and families. We will continue to lead into the future and be a champion of the issues that impact our youngest children.



STATE OF EARLY CARE & EDUCATION 2020
lifting up early childhood

CONVERSATION, PANEL DISCUSSION, & Q&A WITH NATIONALLY-KNOWN EXPERTS

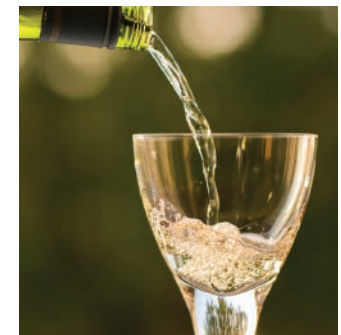
Join us in a discussion about the intersectionality of Race, Social Justice, and Early Childhood Education with nationally-known experts and get the tools you need to take action for children.

VIRTUAL EVENT - WEDNESDAY, OCTOBER 7TH, 2020 - 8PM CST

TOPICS OF FOCUS
Black Male Expulsion Rate in Early Childhood
Impact of Racism on Social/Emotional Development
Early Childhood Workforce: Low Wages, High Expectations.
These are just a few of the complex issues our panelist will address.

JOIN THE CONVERSATION
Watch our "Pre-K to Prison" informational video, find more details about the event, and register at www.evanstonearlychildhood.org/sece-2020

Taste for Tots was our first COVID era virtual event in 2020/2021 – a virtual wine tasting (with real wine!). This replaced the annual gala we have traditionally held in the Spring. This is just one of the many creative ways IWSE has found for unique, safe, and worthwhile opportunities to build community and raise funds for IWSE. We had over 70 participants and had a wonderful evening.



PANELISTS INCLUDE

 JULIANA STRATTON Lt. Governor of IL	 RICARDO ESTRADA CEO of Metropolitan Family Services	 GRACE ARAYA Director, Community Systems Statewide Supports of Illinois Action for Children
 TERRIS ROSS, PH.D. V.P. Policy & Advocacy, Leadership for Educational Equity (LEE)	 JANE ELLIOTT American Diversity Educator	 & MODERATOR CRISTINA PACIONE-ZAYAS Associate Vice President of Policy at Erikson Institute

Lifting Up Early Childhood featured a special conversation with Jane Elliott on race and Early Childhood Education.

We had over 450 participants in an on-line presentation and conversation with Jane Elliott and four Early Childhood leaders in a live conversation moderated by Sen. Cristina Pacione-Zayas. We thank all of the participants, special guests, speakers and planners of this amazing conversation and discussion in our broader community. The Evanston Early Childhood Council and Niles Township Early Childhood Alliance, in partnership with the Evanston Community Foundation, worked closely together to bring this opportunity to our community.

SPONSORED BY: Erikson Institute, Evanston Community Foundation, Evanston Public Library, Daily Children's Alliance

PARTNERED WITH: City of Evanston Dept. of Health & Human Services, Evanston Public Library, City of Evanston Parks & Recreational Spaces, Evanston Township High School, Evanston / Oakton School District, Northwestern University, Garrett Evangelical Theological Seminary, Oakton Community College, Northwestern University Health Systems, Center for Family Health Centers, Grant-Nordberg Family / Evanston Child Care / Grade 4 President / Burnside Exchange / Deaper-Holby / Cape / Center for Independent Futures / Cherry Brook - CME / Connections for the Homeless / Covenant Nursery School / Early Care / Center / Evanston Resolving Mediators / Family Justice / The Institute / Learning Bridge / Learning Alliance / The YMCA / Metropolitan Family Services / Moran Center for Youth Advocacy / Open Studio Project / Peer Services / Resources for Children / SLC / United Way / UNO / ProSchool / North Hill Center / PACE / Family Justice - Children's Network of Evanston School for Little Children - Other Organizations: South Hill / 234th Avenue / Alberta / Able Landis / Linda Alvarez Home Day Care / Susy/Sue Child Care / Northchester Nursery School / Toddler Train / ATSM Early Learning Center / Cherry Brook - Resolving Mediators / Learning Bridge / Bellevue - SWIFT Child Care / Beth Israel Synagogue / Chavrusim / Evanston Citizen Center / Evanston Child Care Center / West Coast Guidance

OUR TEAM

LEADERSHIP AS OF JUNE 30, 2021

Stephen Vick
Executive Director

Buket Ozer
Director of Administration

Cara Strong
Director of Finance

Pamela Staples
Site Director, Baby Toddler Nursery

Tiffany Culpepper
Site Director, Teen Baby Nursery & Family Support Program

Mary Grace Acheron
Master Teacher

Maribel Lagunilla
Administrative Assistant

VOLUNTEERS

Joanne Edid
Mary Beth Roth
Barbara Schechtman

DEVELOPMENT COMMITTEE

Julia Rancke
Kerri-Simone Adedeji
Beth Bodan
Terri Drews
Helen Hilken
Marsha Richman



BOARD OF DIRECTORS

Robert Jones
President
Charitable Tax Analyst in Wealth Management, Northern Trust Company

Beth Bodan
Vice President
Consultant and Project Management

Nicole Van Laan
Treasurer
Controller, Northwestern University

Marsha Richman
Secretary
Early Childhood Education Specialist

Arden Handler
Program Committee Chair
Professor, UIC School of Public Health

Kerri-Simone Adedeji
Marketing & Communications Committee Chair
Strategic Communication Consultant

Julia Rancke
Development Committee Chair
Account Executive, Netsuite-Oracle

Lauren Barney
Managing Director and Senior Counsel

Mollie Bass
Threes Teacher, Beth Emet

Laura Born
Professor, Booth School University of Chicago

Terri Drews
Social Worker, Beyond the Baby Blues

Helen Hilken
Retired, Nonprofit Management and Development

Shelley Keller
Independent Consultant

Sandra Punda
Relationship Manager, Byline Bank



COMMUNITY PARTNERSHIPS

In 2021 IWSE was fortunate to have worked with acclaimed Chef Q. Ibraheem, Owner & Executive Chef of Teertsemasesottehg. Not only is she a local culinary and community(s) hero, but has recently been named a 2021 CNN Hero and 2021 Red Cross Disaster Services Hero of the Year.

Chef Q spent time at both the Baby Toddler Nursery and Teen Baby Nursery on two beautiful warm summer days in 2021 and cooked bruschetta for our infants, toddlers and teachers using fresh herbs from our own gardens. The interaction inspired our teachers to engage in our outdoor spaces and educate our youngest learners in the joy of the taste, touch & smell of gardening and seed to table cooking experiences.

We plan to have Chef Q lead our virtual fundraiser in May of 2022 with an “at home” cooking demonstration. We hope to have her back next summer in our gardens for parent and child workshops on healthy cooking and eating.

Thank you to Chef Q. Ibraheem for her incredible work in the community during the pandemic feeding thousands of people and for taking time to cook for our little ones at IWSE.



Image Credit:
Our Evanston Magazine,
cover.



COMMUNITY PARTNERS

Baby Talk, Inc.
Sue Berger
Bundled Blessings
Warren Cherry Preschool
Learning Bridge Early Education Center
Child and Family Connections
Childcare Network of Evanston
Cradle to Crayons
Connections for the Homeless
Curt's Cafe
Early Childhood Alliance (ECA)
Erikson Institute
Evanston Community Foundation
Evanston Cradle to Career
Evanston Early Childhood Council (EECC)
Evanston Hospital/NorthShore University
Health System
Evanston Latinos
Evanston Public Library
Evanston Rebuilding Warehouse
Evanston Township High School
Family Center at District 65
Family Focus
Infant, Inc.
Kohl's Children's Museum
Metropolitan Family Services
Morton Grove Public Library
Mosaic Early Childhood Center
Niles Township Department of Special Education
Northwestern University
Oakton Community College
Reba Early Learning Center
Share Our Spare
Skokie Public Library
Skokie School District 69
St. Mary's Quilters
United Way North Shore
Village of Skokie
Youth Job Center
YWCA Evanston/North Shore

GOVERNMENT SUPPORT

Illinois Department of Children and Family Services
Illinois Department of Human Services: Child Care
Assistance Program
Illinois Department of Human Services: Child Care
Restoration Grants
Childcare Network of Evanston, for the State of Illinois
Pre-K Contract
Illinois State Board of Education
Child and Adult Care Food Program
City of Evanston: Social Services Committee
City of Evanston: Community Development Block Grant
Evanston Township High School/School District 202
US Department of Health and Human Services, via contract
with Evanston/Skokie School District 65



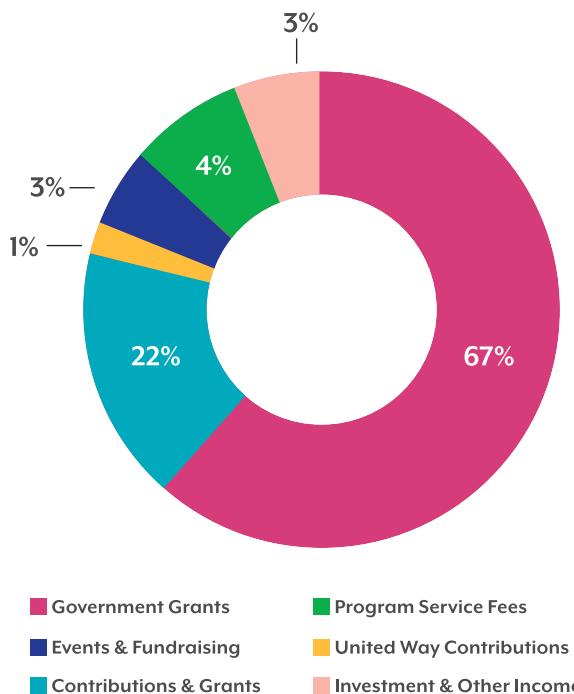
FINANCIAL INFORMATION (AUDITED)

JULY 1, 2020 – JUNE 30, 2021

Revenue

Grants from Government Agencies	\$1,925,210
Contributions and Grants	\$636,219
United Way Contributions	\$38,454
Special Events and Fundraising Activities	\$84,754
Program Service Fees	\$119,169
Investment & Other Income	\$74,311

Total: **\$2,878,117**

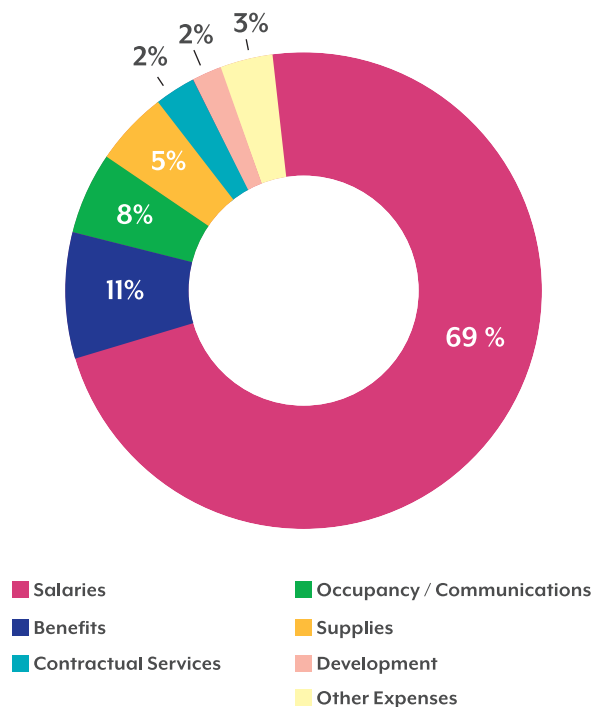


Expenses

Salaries	\$1,880,155
Benefits	\$311,842
Contractual Services	\$52,297
Occupancy / Communications	\$204,995
Supplies	\$139,477
Development	\$43,562
Other Expenses	\$93,919

Total: **\$2,726,647**

Administrative Rate: 11%

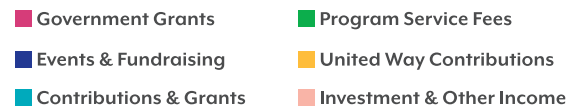
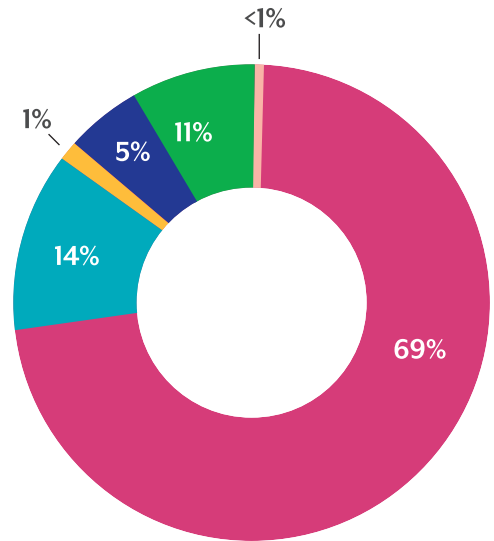


FINANCIAL INFORMATION (BUDGETED)

JULY 1, 2021 – JUNE 30, 2022

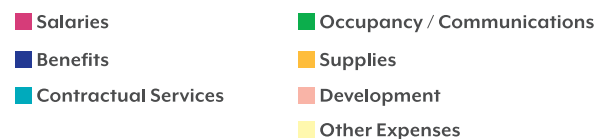
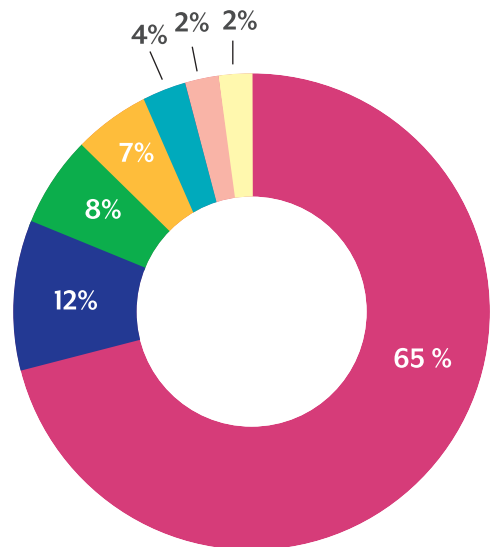
Revenue

Grants from Government Agencies	\$2,086,910
Contributions and Grants	\$410,685
United Way Contributions	\$35,540
Special Events and Fundraising Activities	\$165,000
Program Service Fees	\$322,888
Investment & Other Income	\$2,836
Total:	\$3,023,859



Expenses

Salaries	\$1,958,157
Benefits	\$361,759
Contractual Services	\$109,629
Occupancy / Communications	\$258,371
Supplies	\$199,935
Development	\$60,005
Other Expenses	\$76,003
Total:	\$3,023,859



Administrative Rate: 11%

DONORS

\$100,000+

George R. Kendall Foundation

\$50,000-\$99,999

Evanston Community Foundation

\$25,000 - \$49,999

United Way of Metropolitan Chicago

\$10,000 - \$24,999

Amy and Clay Brock
Joseph and Bessie Feinberg Foundation
Mary and Paul Finnegan
Finnegan Family Foundation
Fortune Brands
Helen Hilken
Kenilworth Union Church
Sean and Michelle Johnson

\$5,000 - \$9,999

Anonymous
The Allyn Foundation, Inc.
Patrick and Anna Cudahy Fund
Mary Ellen Turnbull Fellman Charitable Fund
Steve Hagerty and Lisa Altenbernd
Jackson National Life Insurance
Marsha Richman and Dick Lanyon
Mary Beth Roth
Christopher Ward

\$2,500 - \$4,999

Anonymous
Laura and Kent Born
Byline Bank
Dan and Suzanne Kanter
Louise Keely
Edward and Shelley Keller
Peter and Carolyn Mattox
Northwestern University
Eleanor and William Revelle
Celine Sharpe and Matt Tevenan
Ingrid and Bill Stafford
Ronna Stamm and Paul Lehman
Eli and Rachel Strick
Elizabeth Beidler Tisdahl Foundation

\$1,000 - \$2,499

Anonymous (2)
Abbie Employee Match
Mollie Bass and Ben Swarzendruber
Beth and James Bodan
Don Budzinski and Ron Sangthong
Curtis L. Carlson Family Foundation
Emily Corbett and Allan Allweiss
Julianne and Mark Dieterich
Joanne Edid and Donald Hey
Fitch Group
Sam Fox
Dan Garvey, Garvey's Office Products
James Goodman
Kathleen Harris Quale
Richard and Joyce Hirsch
Kadens Family Foundation
Kathy and Daniel Kaberon
Kathy Kaporis, Evanston Capital Management
Tara Mark and Geoff Oltmans

Peter McGuire
Network for Good
Michelle Rogers
The Silver Family
George Simon
Rhonda Stein and Ed Smolevitz
Becky Sulecki
Nicole and Ben Van Laan
Molly Veneziano
Lois Vick
Julie and Tom Ward
Calvin Willard
Wintrust Financial Corporation

\$500 - \$999

Kerri-Simone Adedeji
Steve Bogira and Jane Neumann
Lisa and Darryl Bradford
Barb Brown
Kathleen Danakis
Sarah Darnton
Terri Drews and Edwin Getz
Kristen Ekeland
Sharon Feigon and Steven Bialer
Arden Handler and Rob Carlton
Susan Handler
Dr. Devon Horton, Sr.
Charles Jaffe
Kaberon Family Charitable Account
Loretta Kaplan
Dawn Livingston
Ruth Lochner
Joanna Lynn
Ann Mommsen
Mary and Robert Moran
Buket Ozer
Allie Payne
Robert Perry Jones, Jr.
Sandra Punda
Mario Retondo
Selma Richman
Cheryl and Mike Rohlf's
Ian and Sheau-ming Ross
Andrew Rowe
MJ and Peter Serene
Cathy Shaw
Toni Stapel
Suzanne Westerhold
Mrs. D. Williams Parker
Mary Zollars

\$250 - \$499

Liz Anderson
Robert Baird & Co Inc
Lauren Barney
Michael Bass
Susan and Donald Belgrad
Kryslyn Burks
Jean Cunningham and Alan Riggs
David and Julie Cutter
Inghram Debes
Caroline Devlin
Julie and Jeff Forgash
Maria Fowkes
Laura Giles

Carolyn Guidotti
Allison Hackney
Greg Hadley
Sarah Hanson
Amy Harms
Cindy Hicks
Henry Hilken
Cathy Jain
Jancy Jerome and Dan Lipson
Sandra Johnson
Frances Kaplan Moore
Janice Kessler
Sara Kirkpatrick
Lisa and Bill Kohr
Andrea Kramer
Michael Lanyon
Katey Larson
Rebecca and Elisabeth Lindsay-Ryan
Sarah Lyke
Jane Mentzinger
Mooney Family Charitable
Gary Neilson and Trudy Havens
Anna Nichols
Louise Odegaard
Jill Polls
Julia Rancke
Sharyn and Edward Reiff
Ruth Schaefer
Schaefer's Fine Wines & Spirits
Allison Shapiro and Scott Stoolmaker
Morry Steinbach
David Tekler
Joe and Margaret Tilson
Alyssa Van Solkema
Brian Walsh
Bonnie Zanger



\$100 - \$249

Marilyn Adams
Eugenie Allen
Erica Anderson
Joyce Anderson
The Barrington Company
Jonathan and Alison Basofin
Beghou Consulting
Karen Berkowsky
Shana Bernstein
Robin Brown
Barb Bruning
Dr. Steven Bussolari
John J Cahill
John J Cahill Plumbing
Linda Canny
Anna Carolan
Elizabeth Carrasco
Mary Jane Chainski
Shakita Chester
Mary Ciapciak
Stacey Cloud
Diana Cohen and David Spitulnik
Hedy Cohen
Evelyn Cooper
Michael Corr
Michaela Cudahy
Charles Davidson
Eliza and Timothy Earle
Tom Edson
EJR Consulting, Inc
Sara Fisher
Ashley Flatland
Mary Foster
Alan Fox
Henry Fox, Jr.
Robyn Gabel
Edward and Bryna Gamson
Tyrie and Daryl Gardner
Mary Gavin
Nancy Gelman and Mark Isenstein
Aleks Granchalek
Katherine Groves
Susan Held
Jeanne Herberger
Elizabeth Hermann
Susan Hilkevitch
Leslie Holling
Janna Howe
Jim Jackson
Kathleen Jackson
Anita Jacobson
Lynne Jeffrey
Rose and Bob Johnson
Sarah Kalinowski
Mary Ann Keeler
Zeynap Kinaci
Meg King
Mike and Anne Klaskin
Thomas and Teresa Klier
Jon Korfmacher
Jerome and Marcia Kraut
Kroger
Judette Kurasz
Ann Laetz
Marti Lannert
Linnea Latimer
El Cabrel Lee
Mrs. Chase Levey
Adrienne Lieberman
Ann Mahurin

Daniel and Lynne Mapes-Riordan
Diane Markoff
Vivian Marks
Dr. Sarah Markuson Raleigh and Dr. Robert Christie
Rosa McAndrew
Ann McArthur
Glen McCluskey
Jennifer McComb
Elaine McIntyre
Jill McLaughlin
Jean McShane
Rebeca Mendoza
Sheila Merry
Jill Mueller
Susan Munro
Sarah Muyres
Carolyn Myszkowski
Lori Nelson
Tom Niemann
Dave Nogle
Phil and Gwen Nyden
Susan Olson
James Park
Mrs. Sun Ok Park
Nadine Peacock
Julie Phelps
Mindy Ponton
Christine Rascati
Robin Remich
Betsy Richman
Melissa Riemer
Anne Roberts
Sally and Michael Rosenberg
Helene Rosenblum and Brad Pechter
Elizabeth Rothermel
Karen and Bob Rutigliano
Nancy Salkover
Barbara Schechtman and Chris Thale
Stu and Carol Schweidel
Mr. Cashton Sessler
Kristi and Fred Shepherd
Jill Smith
David Snyder and Margaret Salamon
Scott Stavish
Allen Taflove
Mary Tarr
Kimberly Taylor-Smith
David and Shirley TerMolen
Randall and Debra Usen
Daniela Val
Judy Varn Hays
Dia and John Walsh
Susan Warner
Ruth Watson
Cherie Weil
Thomas Westervelt
Dr. Murphy and Jack Westwood
Eric Witherspoon
Cass Wolfe
Judy Wolkin
Mary Womsley
Mollie Zachry
Frank and Tina Ziegler
Ms. Jean Anne Zollars





Less than \$100

Rainy Abbott
 Donna Abelson
 Yvonne Albano
 Susan Ammann
 Mrs. Martin Anderson
 Mrs. Henry Arnold
 Paula Arnold
 Anita Austin
 Rita Bagus
 Lynne Ballard
 Stephanie Ballard
 Heather Beam
 Janine Beatty
 Ann Becker
 Bradley Beebe
 Linda Bein
 Susan Belgrad
 Cindy Bell
 Kathleen Benedict
 Betsy Berenson
 Elizabeth Biggar
 Ilene Birge
 Elizabeth Bjorkman
 Ruth Blair
 Mary Blazel
 Ann Bley
 Helen Boeshart
 Sue Boman
 Susan Bonesteel
 Virginia Boorum
 Lorraine Born
 Connie Brady
 Christine Brodeur
 Elizabeth Brooke
 Ann Brown
 Harriett Brown
 Robin Brown
 Loretta Buchanan
 Leigh Buettner
 Laurel Burnham
 Frances Carter
 Lori Churchill
 Susan Clardy
 Carolyn Clark Foster
 Mary Clay
 Martha Cogswell
 Tom Cogswell
 Robin Cohan
 Sandra Cohrs
 Cynthia Coleman
 Judith Coleman
 Anne Cooper
 Allison Crawley
 Dorothy Crocker
 Mary Jane Crook
 Olivia Crudgington
 Ann Davis
 Harriet Davis
 Peggy Dickman
 Bonnie Dohogne
 Louisa Duemling
 Eleanor Durno
 Sandra Earthman
 Linda Eisendrath
 Jeanette Elbers
 Lois Ell
 Sylvia Ellis
 Jane Espy
 Exelon
 Mrs. Gordon Fales, Jr.

Mary Ann Farmer
 Patty Fensterwald
 Mindy Ferber
 James Finger
 Alison Forbis
 Claire Forney
 Giacomo Fragione
 Linda Franklin
 Barbara Gahagan
 John and Pamela Garbarini
 Ann Gardiner
 Joan Gately
 Stacie Geller
 Samuel Gentles
 Margaret Ginn
 Carol Goeman
 Cathline Goerwitz
 Mimi Gokey
 Elizabeth Goodwin
 Joe Grainger
 Dale Griffin
 Sally Gross
 Susan Grubb
 Elizabeth Guidry
 Nancy Guthrie
 Carolyn Guyton-Ringbloom
 Marcia Haecker
 Marcia Haller
 Janet Halliday
 The Hampton-Marcells
 Margaret Harper
 Catherine Hartwell
 Valerie Harvilik
 Sarah Hecker
 Ann Henderson
 Sylvia Henderson
 Mrs. Rue Henry
 Barbara Herst
 Christine Hess
 Carol Hirsheimer
 Phyllis Holman
 Pat Hoops
 Marianne Hottenstein
 Beverly Howell
 P. G. Huegerich
 Nicole Huggins
 Ann Hugh
 Elliott Hurtig
 Bill James
 Patricia Johnson
 Anne Jones
 Barbara Jones
 Marty Jones
 Nancy Jospey
 JustGive Great Nonprofits
 Kelly Kasper
 Laura Keegan
 Alison Keeler Carrillo
 Diane Keely
 Patrick Keenan-Devlin
 Frances Keiser
 Elizabeth Kernahan
 Victoria Kimball
 Susan King
 Judith Kittredge
 Anne Klein
 Shirley Klinka
 Beverly Kohfeld
 Mary Ann Krauss
 Joseph Kuechel
 Judith Kuller

Richard Lambert
Helen Lane
Janice Larson
Karen Lassey
Mary Lazarus
Joan Lewis
Phil Lisle
Susan Long
Liliana Lopez
Marcena Love
Dale Lovett
Marian Lowry
Klara Lueschen
Dorothy Lussier
Mary Therese MacAuley
Lynne Mace
Ann Mack
Laura Madden
Wendy Madden Burke
Marjorie Matthews
Janet McCannon
Michelle McClure
Marilyn McCoy
Sunny McCoy
Gilbert McCrary
Mrs. John McDonald
Carolyn McNamara
Joy McRoberts
Julia Merriman
Lorraine Milius
Tim Miller
Marilyn Miller Schmidlin
Barbara Minkus
Bonnie Mitchell
Margery Mitnick
Matt Mitzen
Phyllis Mitzen
Ash Miyagawa
Jan Moe
Susan Moore
Dulaney Morriss
Mary Mortimer
Nancy Mott
Lenore Mulock
Bren and Chris Murphy
Gerd Murphy
Mary Murphy
Sister Jude Marie Naiden
Mrs. Walter Newbern
Gretchen Nord
Nancy O'Brien
Nancy Oltman
Leslie Parrish
Heidi Parsons
Diane Pennock
Karl Peters
Judy Pfingsttag
Janet Pierson
Francesca Pilati
Louise Plank
Georgine Premo
Angela Ramsperger
Susan Ray
Judith Reed
Suzanne Richards
Sarah Richardson
Paula Ringkob
Susie Robinson
Eileen Roger
Debby Rogers
Elise Rosenberg

Judith Rosenblum
Kathryn Rossow
Linda Rousos
Robin Rudd
Joan and John Rudnicki
Diana Ruffino
Margery Russell
Sherri Ryan
Kathryn Sampson
Gail Schaaf
Karen Schaefer
Doraline Schipper
Mary Schmid
Susan Schneider Holliday
Sally Schrader
Peg Schuessler
George Scragg, Jr.
Rose and David Seidman
Louise Seiler
Nancy Semerdjian
Robert Shank
Kathleen Sharp
Maureen Shelly
Jacqueline Shohet
Dorothy Shook
Cathy Shulkin
Claire Simon
Mary Sloan
Gwen Smith
Lucy Smith
Roger Smith
Robbin Smith Greve
Margaretta Stabler
Vicki Stanton
Reva Steinberg
Ann Stevenson
Betty Stevenson
Julia Stone
Elizabeth Sullivan
Jennifer Sundberg
James and Nancy Swartzendruber
Deborah Taylor
Carol Teske
TisBest
Carol Trapp
Theresa Ueland
Virginia Uhlman
Sarah Underdal
Cary Vaughan
Ann Vickers
Josh and Alisha Vincent
Vizient
Margaret Von Der Linde
Agatha Wade
Pamela Wade
Sherry Walker
Jean Waltersdorf
Bob and Hyong Suk Warfield
Amanda Warren
Judy Weber
Katherine Webster
Ann Weimer Hannah
Mary Wells Vournakis
Mrs. John Wenaas
Nancy Weyerhaeuser
Lucy Wick
Meg Wiersema
Sherry Wiese
Barbara Williams
Eleanor Williams
Jill Wine-Banks

Joel Witmer
Mary Witte
Sarah Wolodkiewicz
Louise Kay Woodside
Diane Wrocklage
Elizabeth Wurzweiler
Mary Yost
Elsa Zollars
Geraldine Zurn

In Kind Sponsors

Alisa Arnoff
Captain James Lovell Federal Health Care
Center
Chris Baer
Mollie Bass
Beth Bodan
Infant, Inc.
Micro-Tech USA
Schaefer's Wine, Foods & Spirits
Target



**THANK YOU TO ALL
OF OUR DONORS,
COMMUNITY
PARTNERS, AND
SUPPORTERS!**







The Infant Welfare
Society of Evanston, Inc.

**BABY TODDLER NURSERY &
ADMINISTRATIVE OFFICES**

2200 MAIN STREET • EVANSTON IL 60202
IWSE.ORG • 847.491.9650

FAMILY SUPPORT PROGRAM

5050 MADISON ST. • SKOKIE IL 60077
4121 OAKTON AVE • SKOKIE IL 60076
IWSE.ORG • 847.864.2324

TEEN BABY NURSERY

2010 DEWEY AVE • EVANSTON IL 60201
IWSE.ORG • 847.864.6945

